



DIFFERENTIAL DIAGNOSIS OF CUTANEOUS TUBERCULIDS



Chee Won Oh¹, Chi Yeon Kim²
Dept. of Dermatology
Kangwon National University¹,
Gyeongsang National University²,
S. Korea

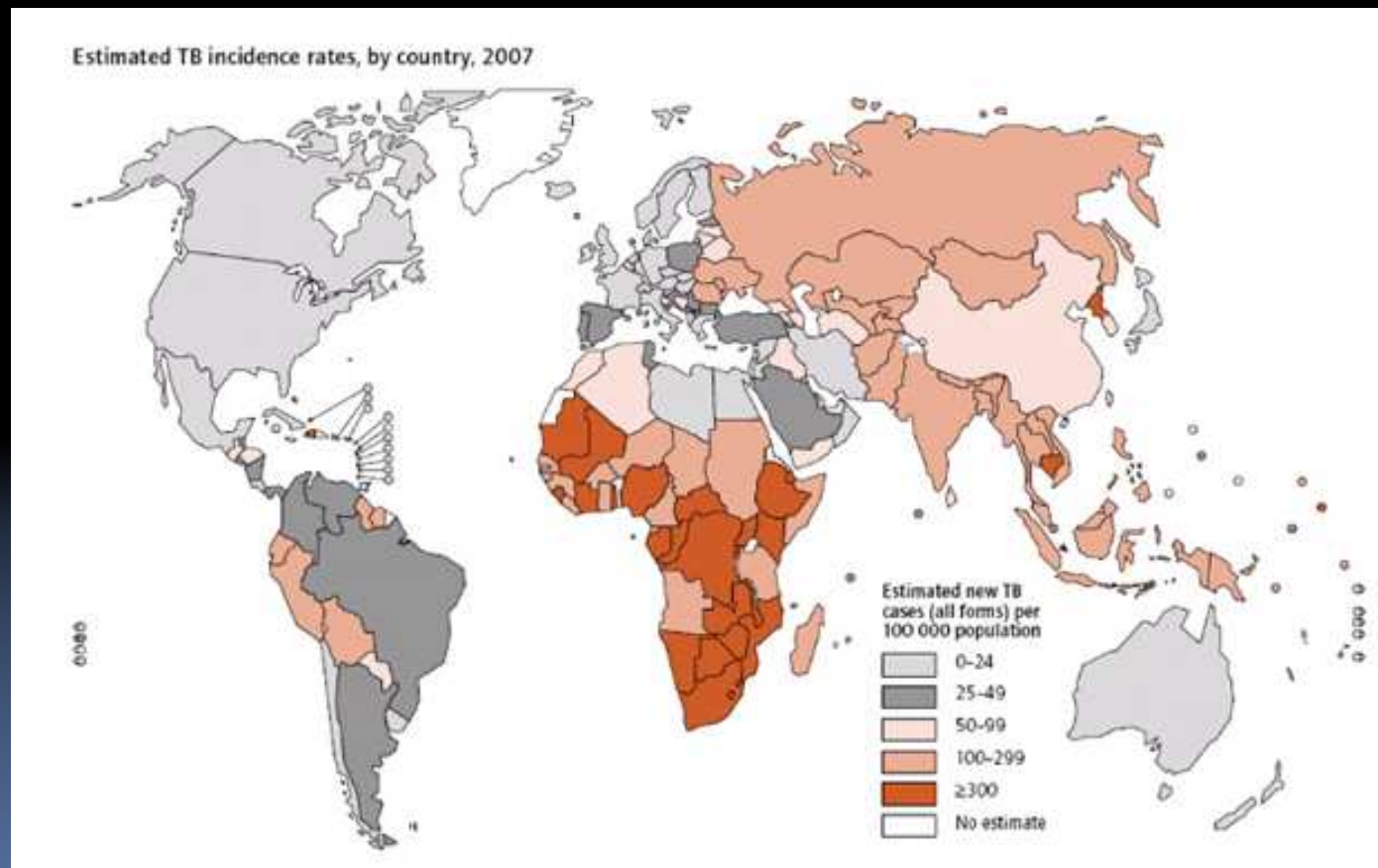
What is Tuberculid?

- a group of skin conditions associated with an underlying or silent focus of tuberculosis(Tb).
- Pathogenic relationship of the tuberculid to Tb ; still poorly understood

Why Important?

- Frequent travelling , migration
- Unfamiliarity
- Recent resurgence associated with AIDS
- Favor slim body contour

Estimated Tb incidence rate by country, 2007

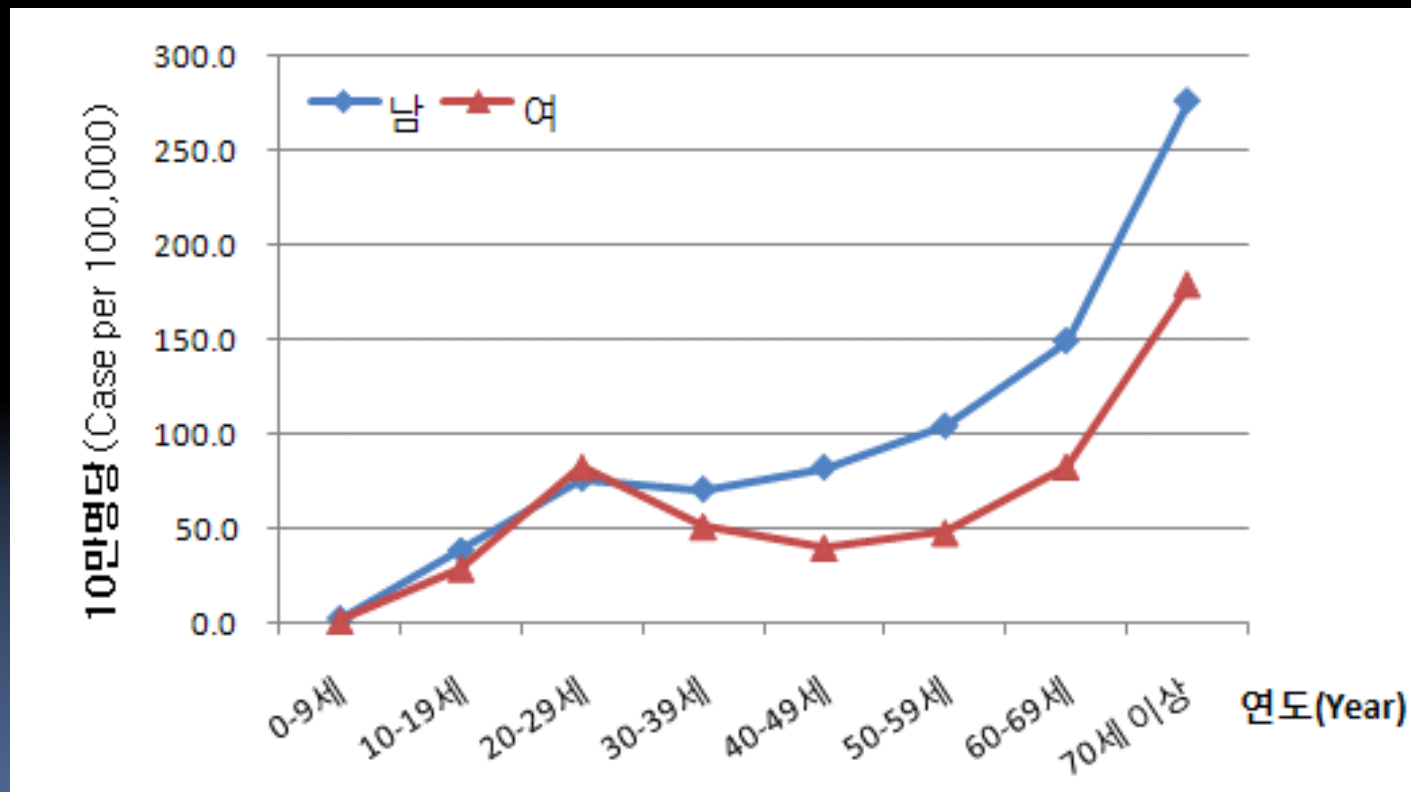


Case Tb notification rate per 100,000 by year in Korea, 2003-2009

Table1. Trend of case notification rate per 100,000 by year, 2003-2009

연도(Year)		2003	2004	2005	2006	2007	2008	2009
전결핵 (All forms of TB)		30,687 [64]	31,503 [65.4]	35,269 [73]	35,361 [73.2]	34,710 [71.6]	34,157 [70.3]	35,845 [73.5]
폐결핵 (Pulmon-ary TB)	활동성 (Active)	26,940 [56.2]	27,947 [58]	30,098 [62.3]	30,371 [62.8]	29,705 [61.3]	28,344 [58.3]	28,922 [59.3]
	도말양성 (Smear +)	10,976 [22.9]	11,501 [23.9]	11,638 [24.1]	11,513 [23.8]	10,927 [22.6]	11,048 [22.7]	11,285 [23.2]
폐외결핵 (Extra-pulmonary TB)		9,747 [7.8]	3,556 [7.4]	5,171 [10.7]	5,044 [10.4]	5,005 [10.3]	5,813 [12]	6,923 [14.2]

New Tb notification rate per 100,000 by sex and age in Korea, 2008



Definition of Tuberculid

- Hypersensitivity reaction to *M. tuberculosis* or its product in a patient with significant immunity

Dx. Criteria of Tuberculid

- 1) Positive tuberculin test
- 2) Evidence of manifest or past Tb ; 'sometimes'
- 3) Positive response to anti-Tb therapy
- 4) Always absence of bacilli
in skin Bx. specimen and culture
; PCR(+) in PNT and EI

Classification of Tuberculid

- *Andrews' Disease of the Skin 9th ed.*
P. 423 –425, 2000
 1. Papulonecrotic Tuberculid (PNT)
 2. Erythema Induratum of Bazin (EI)
 3. Lichen scrofulosorum

1. PNT



Korean dermatology 4th ed. 2001 P.298

2. EI



Anthony du vivier. Atlas of clinical Dermatology 2nd ed. P. 11.12

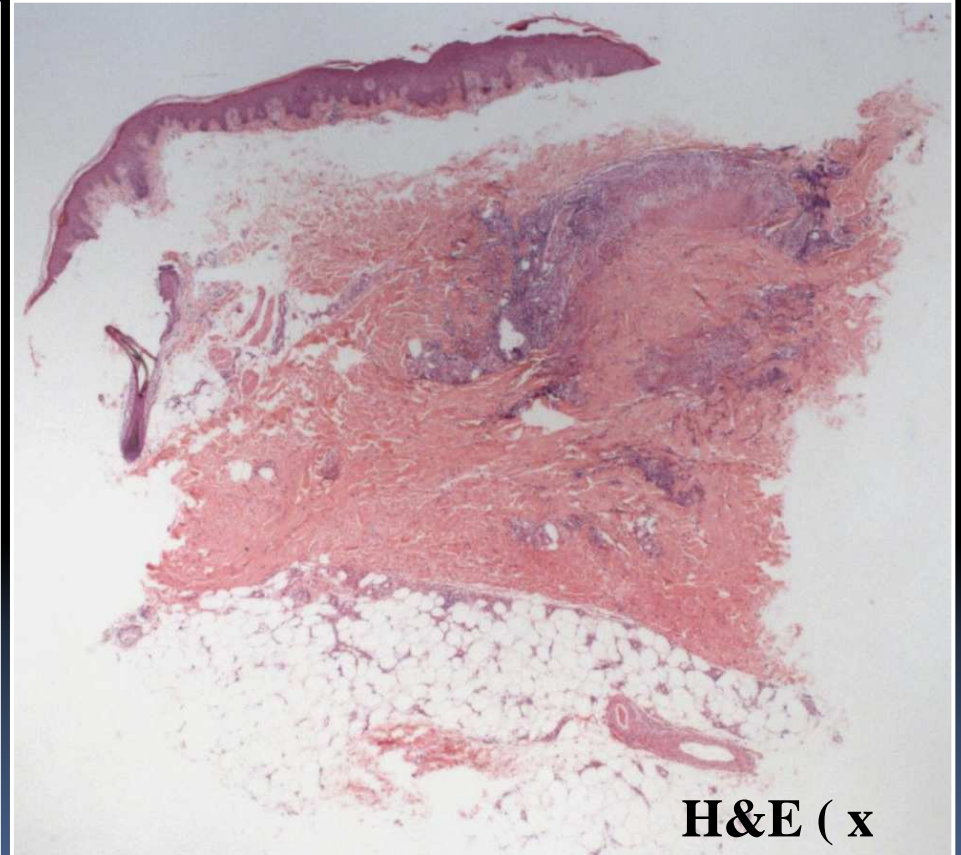
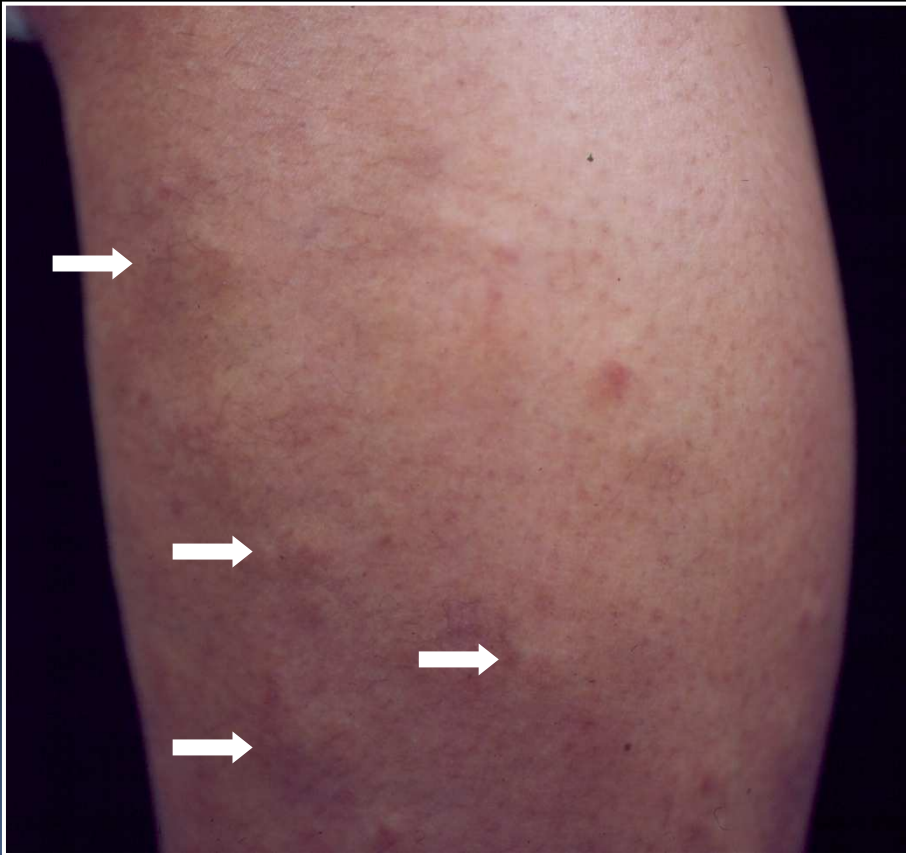
3. Lichen scrofulosorum



Rook's Textbook of dermatology 7th ed. P. 28.21

Classification of Tuberculid

- *Rook's Textbook of dermatology 7th ed.*
P. 28.20, 2004
 - Micropapular : lichen scrofulosorum
 - Papular : PNT
 - Nodular : EI, nodular Tuberculid



**H&E (x
12.5)**

Clinical Course



Before Treatment



After Treatment, 7wks

Distinct Entity ?

Pediatric Dermatology

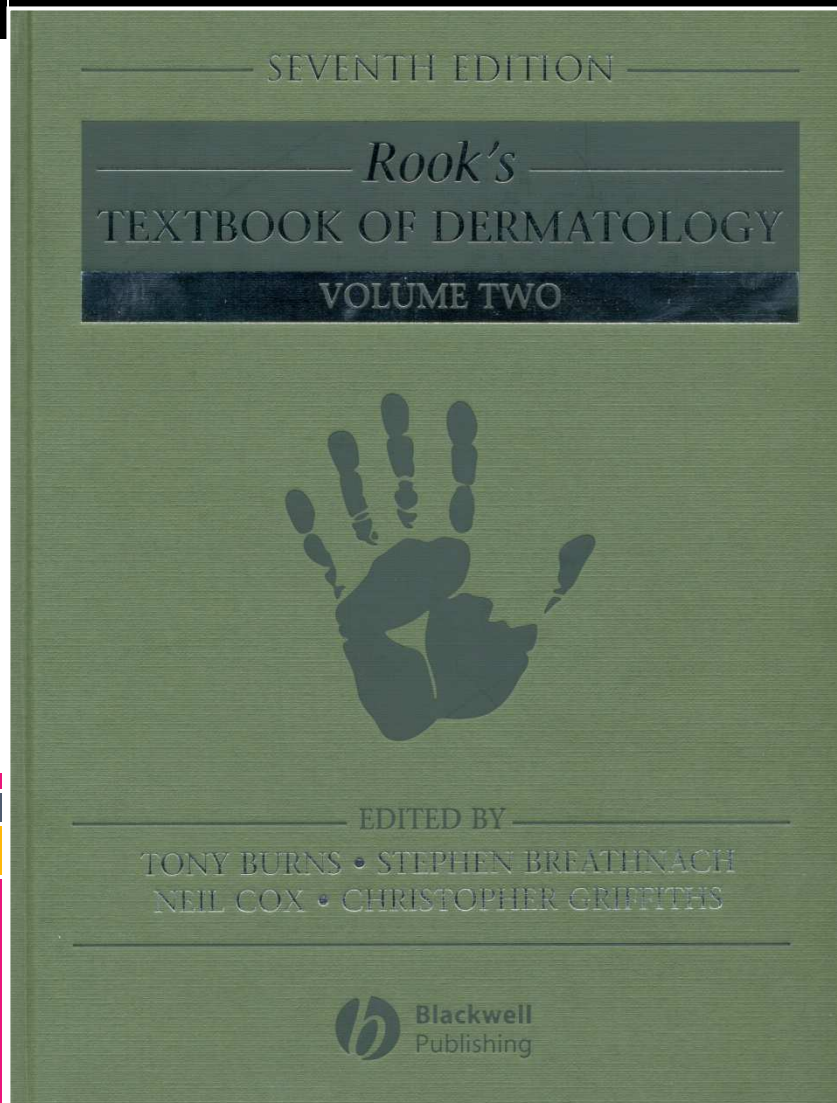
Volume 18 Issue 2 Page 165 - March/April 2001

doi:10.1046/j.1525-1470.2001.01894-3.x

Is 'Nodular Tuberculid' A Distinct Entity?

Bhushan Kumar, M.D., M.N.A.M.S., Davinder Parsad, M.D.

To the Editor:



Nodular tuberculide. Jordaan *et al.* [2] have documented four female patients with dull red or bluish-red non-tender, non-ulcerating, nodules 1 cm or slightly larger in size, located on the lower legs. Pathological changes of granulomatous vasculitis were situated at the junction of the deep dermis and adjacent subcutaneous fat. The Mantoux test was strongly positive in all patients, and associated pulmonary tuberculosis was present in two. All lesions cleared promptly with full antituberculous therapy. They argue that there is a case for a tuberculide where the pathological process occurs neither in the superficial dermis, as in papulonecrotic tuberculide, nor in the subcutaneous fat as in erythema induratum, but rather at the junction of the dermis and subcutaneous fat.

Classification of Tuberculid

- *Fitzpatrick's Dermatology in General Medicine*
7th ed., p1774, 2008
 - Tuberculids; lichen scrofulosorum,
papulonecrotic tuberculid(PNT)
 - Facultative tuberculids; erythema induratum(EI),
erythema nodosum(EN)

